

The Chadwell

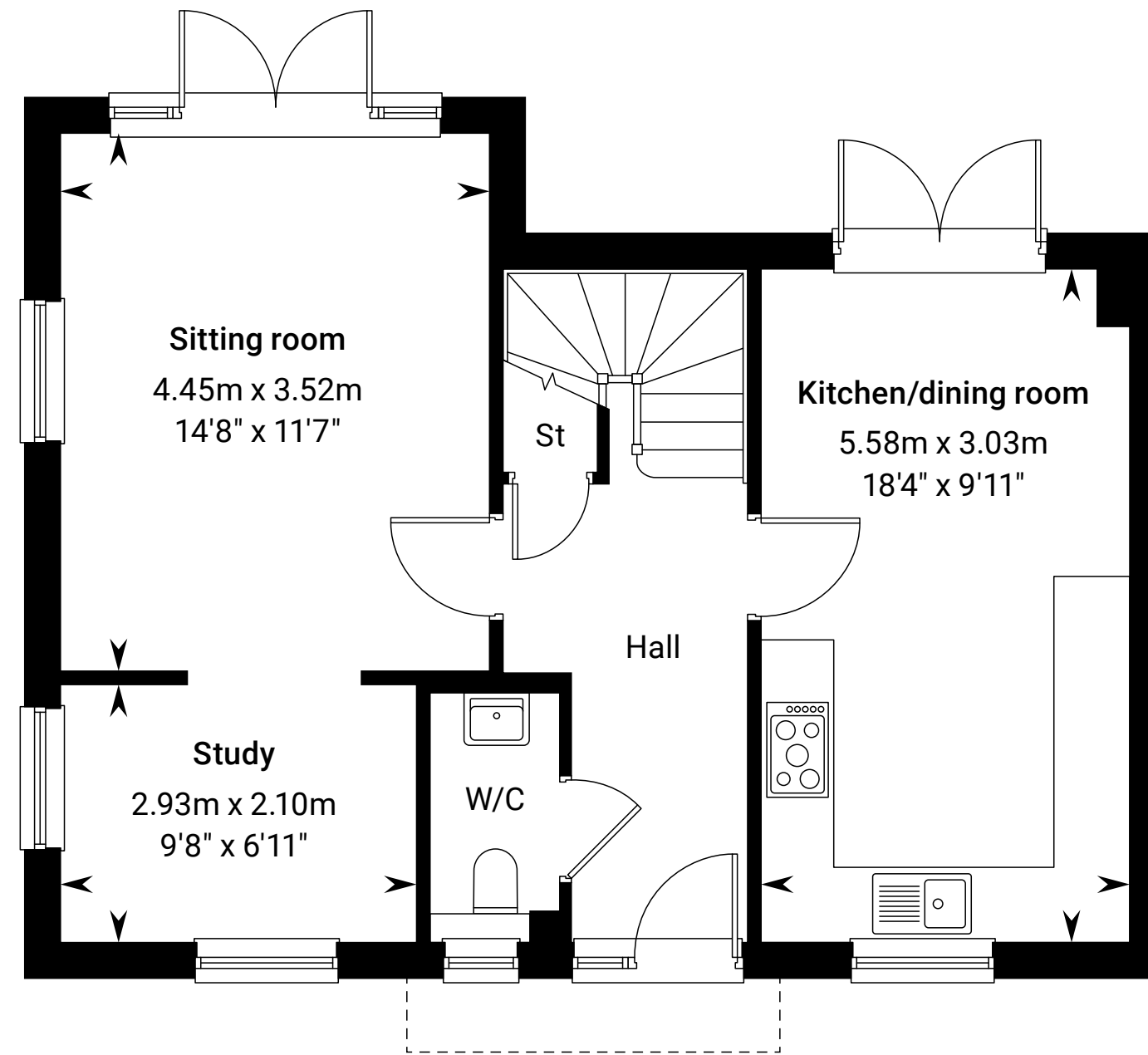
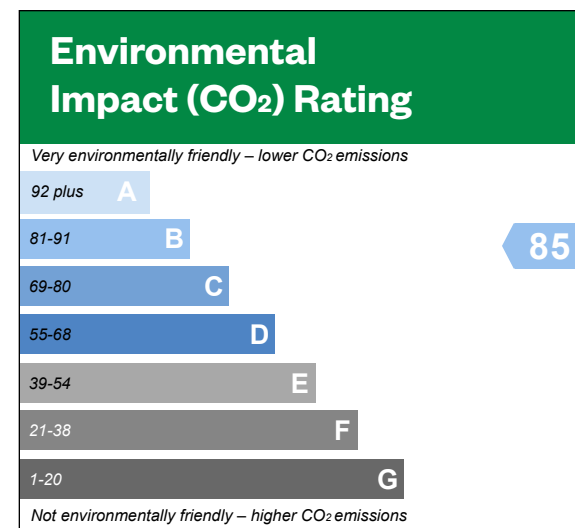
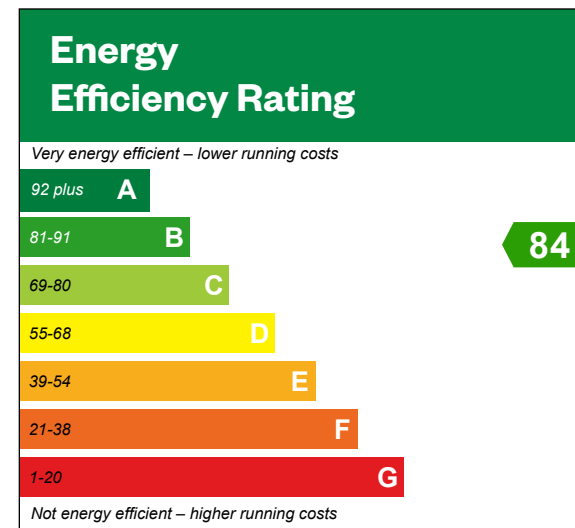
3 bedroom home



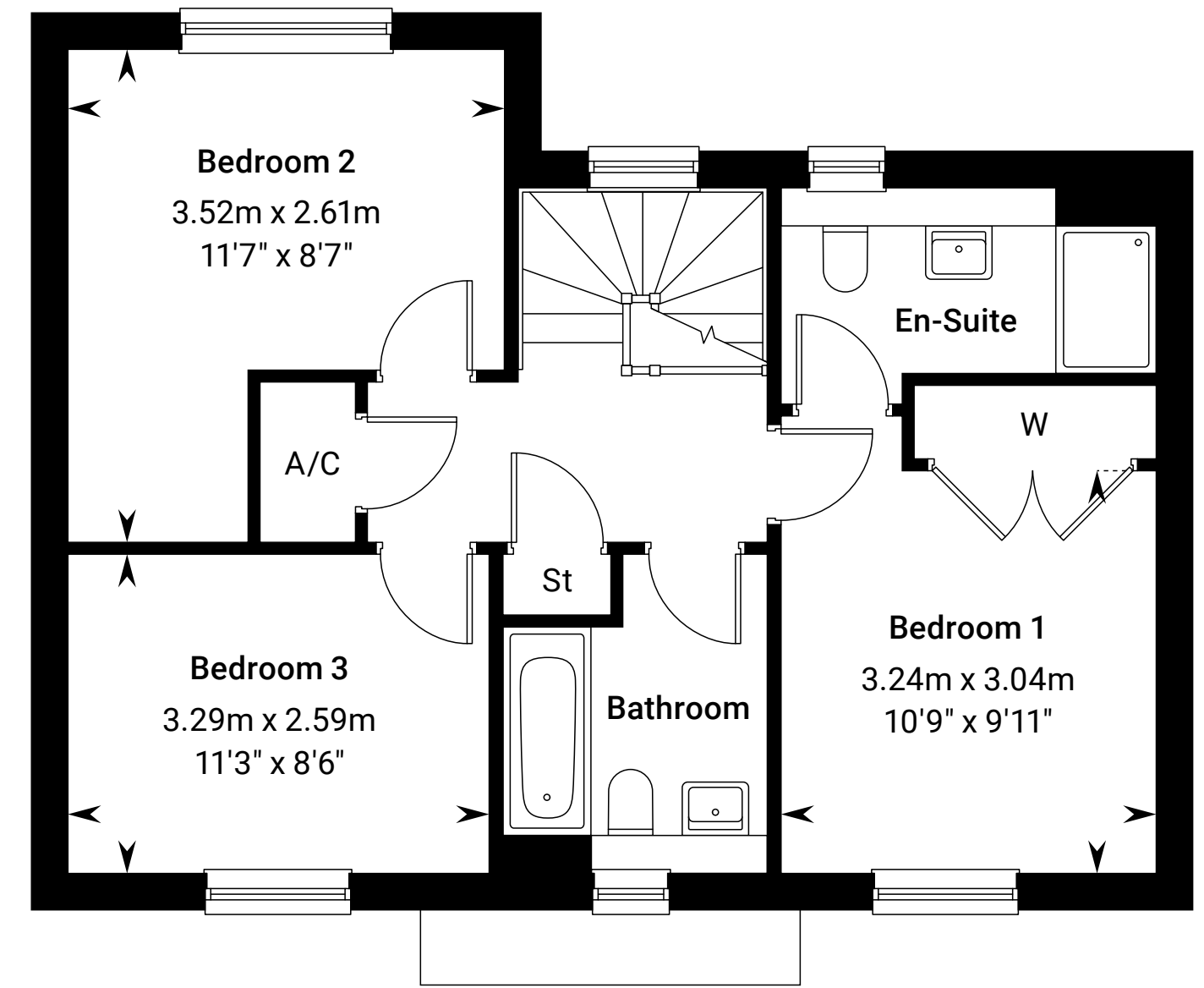
Cross Trees Park

The Chadwell

Plot 473 – as shown
Plot 435 – handed



Ground floor



First floor

Please ask your Sales Consultant for further details. A/C: Airing cupboard. St: Store cupboard. W: Wardrobe.

The Consumer Protection from Unfair Trading Regulations 2008. Legal & General Homes operates a policy of continual product development and the specifications outlined in this brochure are indicative only. Information contained is accurate at date of publication on 09.04.2024. See the main brochure for the full Consumer Protection statement. Predicted Energy Assessment for properties that are incomplete. Once the property is completed, this rating will be updated and an official Energy Performance Certificate will be created for the property.